



# Pastoral Ministries Report 2006 – 2007

Registered households: 597

Total registered parishioners: approx. 1600

*44 new households joined St. Anne Parish between July 2006 and June 2007*

## Sacraments

Baptisms	31	Confirmation ( <i>teen and adult</i> )	14
Professions of Faith <i>5 adults &amp; 4 youth entered the Catholic Church through RCIA</i>	9	Marriages <i>5 couples prepared for marriage at St. Anne and celebrated their wedding here or in another parish, state or country</i>	5
1st Reconciliation / 1st Communion	36	Funerals	15

## Ministries

### • Liturgies

*An 8:00 am Mass was added to the schedule of weekend liturgies. In addition to our presider, Fr. Paul Pluth, our liturgies were served by 26 Eucharistic ministers, 30 readers, 24 altar servers, 14 sacristans, 55 musicians in three choirs, and 10 ushers. Fr. Paul also presided at weekday Masses, and 9 lay presiders led weekday prayer and communion services. Other volunteers helped to provide weekly fresh floral arrangements and to keep the church environment and foyers clean and organized.*

### • Parish School

*252 students were enrolled at St. Anne School for the 2006—2007 school year (230 in grades 1st—8th, 22 Pre-K), served by 36 faculty, administrators and staff.*

### • Children's Faith Formation

*Children's Liturgy of the Word (CLOW) was offered September through May at the Sunday 10:00 am Mass, with approximately 70 children participating weekly. 12 families participated in the Sunday morning family-based Elementary Faith Formation Program designed for students not attending Catholic schools. Nursery Care was provided for the Sunday 10:00 am Mass throughout the year.*

### • Adult Faith Formation

*12 Adult Faith Formation programs were offered throughout the year, including four Bible Study series, a Lenten Retreat, faith-sharing programs during Advent and Lent, and two Catholicism for Adults series.*

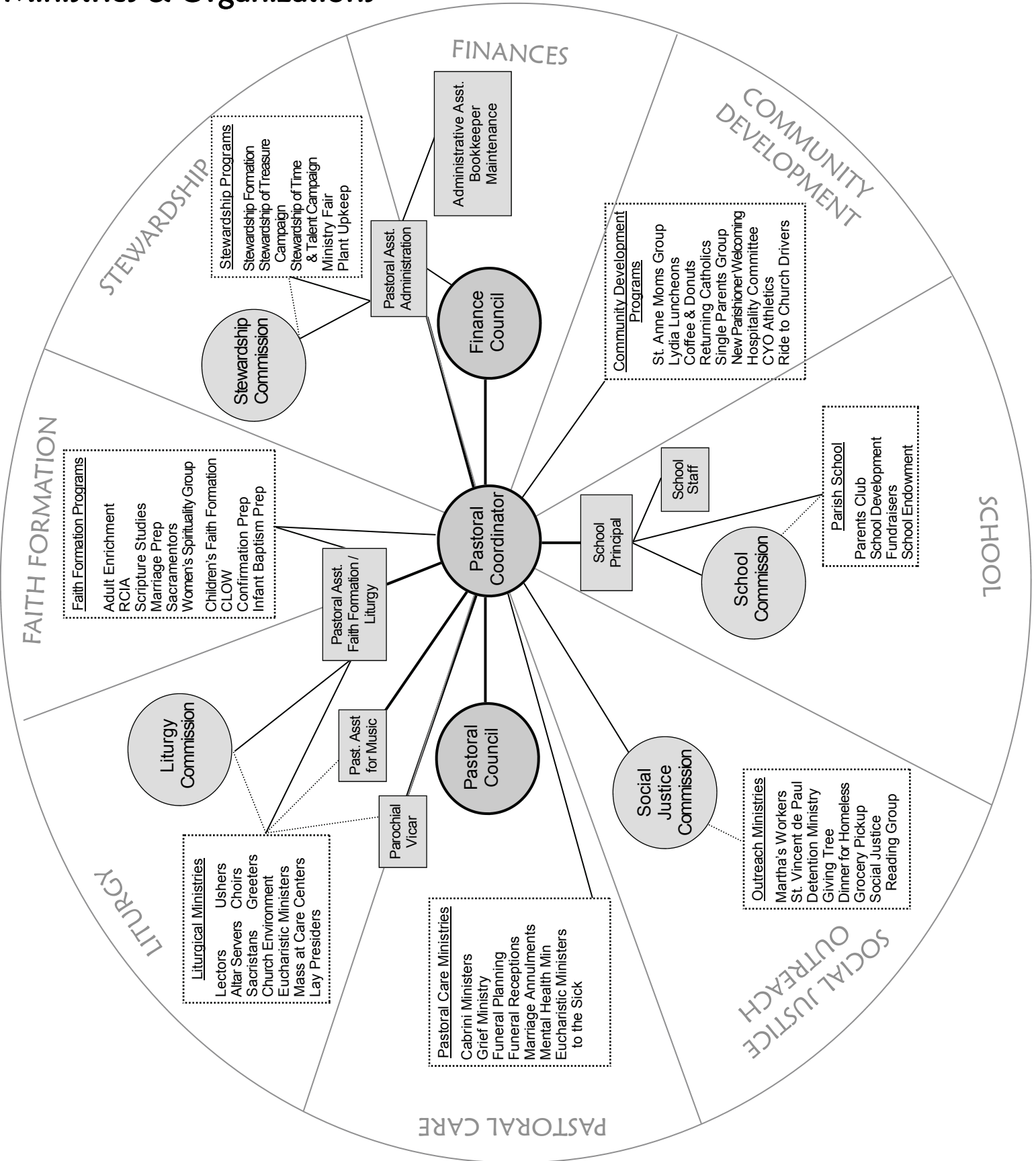
### • Ministry to Homebound Parishioners and Residents of Care Facilities

*Mass and communion services were regularly celebrated with residents of Bayview Manor, Queen Anne Healthcare and Queen Anne Manor. Also, Cabrini Ministers and other volunteers brought communion and pastoral care to our homebound parishioners.*

## Other Parish Outreaches and Activities

- Mental Health Ministry
- Hospitality Committee
- St. Anne Moms
- Single Parents Ministry
- Martha's Workers
- St. Vincent de Paul Society
- Sacramentors
- Detention Ministry
- Dinner for the Homeless

# St. Anne Parish Ministries & Organizations



## PASTORAL REPORT SUMMARY by Carmen Suazo, Pastoral Council Chair

Last week you heard from The Chair of our Parish Finance Council, Craig Parietti, and saw the St Anne Income and Expense report. Here are some of the highlights:

- After major cuts in the budget, we are \$30,000 short.
- \$54,000 of the sacrificial giving pledges was not fulfilled.
- We've not filled the gap of losing the income from St. Margaret's, or from interest on our savings used in the School/Banchemo Hall renovation.

Today, I'm going to talk about who we are and what we are doing with the money we have.

### Who are we?

We are considered a medium size parish within the Archdiocese with just under 600 households or about 1600 people. Based on the Archdiocesan data, we are a community where 40% of the parishioners are under 24 years of age, 50% are in the 25-64 year range, and 10% are over 65. We have had 44 new households join our parish in the last year. We are a mix of folks who are second or third generation St. Anne members, and those who have moved here in the last two weeks. We have retirees and folks at the height of their careers. We have our future in the young, and our history in the elderly. We are a vibrant group!

### When you think of this parish, what comes to mind?

**Mass.** Yes we have three of those each weekend and a combination of Mass and prayer service every week day. To accomplish this we have a Liturgy Commission that oversees the lectors, Eucharistic ministers, altar servers, liturgy planning, and music.

**Celebrations and sacraments?** Yes, of the major sacraments and events, in the past year we've had:

- 31 baptisms
- 24 confirmations
- 5 St. Anne couples married
- 36 first Eucharists
- 15 funerals

**Catholic education?** Yes, we have a thriving Pre-K through 8<sup>th</sup> grade program, a wonderful school staff, and a strong School Commission. St. Anne School is one of the few near capacity parochial schools in the area.

**Service?** We help organized groups like St. Vincent de Paul and Martha's Workers which provides significant support to the Family and Adult Service Center. We also have a Detention ministry, Giving Tree at Christmas, and in December we host a dinner for about 250 homeless adults and children. We have a weekly grocery pick up and delivery to homeless shelters, and the St. Anne's Moms Group provides help for agencies working with infants and mothers in need.

**Social Gatherings?** Yes, we have coffee & donuts, New Parishioner Socials, an Annual Picnic, Harvest Festival and St. Patrick's Day dinner.

And **faith formation?** This includes, RCIA, Adult Enrichment, Returning Catholics, CLOW, Sacramentors, and Scripture studies.

These are some of the things we get even with our ever-decreasing amount of money.

### Where does the money go?

A significant portion goes to staff salaries and benefits. In the past three years we have had to eliminate 3 staff positions: youth minister, school liaison and pastoral associate. Now, we are down to seven paid staff: three full-time and four part-time. Also, we have not been able to pay our staff even 85% of Archdiocesan recommended salary scale. In contrast, our school pays our teachers 100% of the Washington State current year scale. So, while a significant portion of our budget is for staff, these people are making significant personal sacrifices. This year, in order to get closer to a balanced budget, we cut some staff salaries and hours. I believe that this is the wrong direction.

Next comes our school subsidy. The school is our largest ministry, yet the amount the parish has contributed to the school has fallen by 1/3 over the past three years.

Our music ministry receives more than 10% of our budget, but, as in all of our program areas, the loss of income has necessitated cuts in this area. In the past three years we have had to cut back on the all the ministries budgets by 50%.

Ten percent of our budget goes to facility maintenance. Decades of neglect to our church building are being addressed through our current capital campaign and renovation project. However, our maintenance fund is down to a minimal amount making it difficult to stay on top of regular maintenance needs.

And, lastly, not only do we not receive any money from the Archdiocese for our parish expenses, we pay an annual assessment to the Archdiocese, to cover the Archdiocese's expenses. This year our assessment is \$40,000. This is above and beyond the amount we give as part of the Annual Catholic Appeal.

### In summary,

- We have over 150 people regularly participating in our liturgy ministry.
- We give both inside our parish and to the greater community.
- We have been frugal with our limited funds, and are now at the point of having to decrease some of our ministries.

Our expectations and needs for our faith community are as varied as we are. Whether we come to St. Anne Parish for peace, hope or salvation, our community and our beliefs are our strengths. Whether you are in your retirement years looking for solace, or if you are a family dealing with the stresses of childrearing, or whether you are a young adult out in the world finding your niche, this parish can be a support. In a time of fast paced living, high material values and desires, we have an opportunity to come back to the teachings of Christ: service, simple living and community.

Two years ago I received a significant cancer diagnosis. My work community, friends and family all stepped up to the plate to help me and my family weather the trials of surgery, chemotherapy and radiation. The one group that made the most difference to my year of treatment was this community. People I had never spoken to shared their faith with me; they kept me and my family in their prayers; they helped me to let God do His work. That's the kind of community we are—one that cares. We are St. Anne.

## What parishioners are saying about the ministries, organizations and outreaches of St. Anne Parish...

**S**ince I have been retired I've had more time to appreciate St. Anne parish. St. Anne is my community, Queen Anne is my village. St. Anne church is the apex of my faith life. I have a daily opportunity to go to formalized prayer experience. I value it very much. *Tom Challoner*

**T**hrough Family Faith Formation, our son who does not attend St. Anne School has received the essential Catholic foundation in his life, including preparation for the sacraments. For our older son, who does attend St. Anne School, the parish has been a teacher of being of service to others. We hope for further growth for both through a renewed Youth Ministry program at our parish. We have received a deeper understanding of our Catholic faith through working for many years along side other parishioners on Baptism preparation, and in recent years through Marriage Annulment ministry. We have been blessed to participate in parish outreach programs like the Dinner for the Homeless, Catholic Seamen's Club, and Family & Adult Service Center. Our faith has also been sustained through various parish prayer groups over the years. For a dozen years, St. Anne has been a big part of being "home" in our neighborhood, and a source of support through prayer. *Joe and Sheila Prusa*

**F**aith and good works. St. Anne's has given me the opportunity to grow and to increasingly share both. Most recently, something so simple as gathering the people of God around the banquet table is a continuing visual reminder to me of our connection to both God and to each other. It is that sense of connection that makes participation in parish ministries not only useful to others but meaningful, even fun, for me. (Nothing says good deed-doing has to hurt!) I have been a member of St. Anne's for some years but I continue to be energized in my faith by the vitality of the parish community. *Carol Yund*

**F**irst, when I began the ministry of being a Eucharistic Minister, I found it deepened my faith in the reality of the true presence of Jesus. It was a ministry I was and still am loving. The next big leap of faith was my training to become a Cabrini Minister. Through that ministry I found I get so much more out of this ministry and the people I meet every day. It confirms what I have always believed--that I am meant to serve. In addition, I've found the many opportunities I have had at St. Anne's to learn more about my Catholic faith and scripture have been an ongoing strengthening of my faith. The classes given by Ron Ryan have been amazing, as have the homilies of Fr. Paul. All in all, St. Anne Parish has been a true faith community for me. *Marilyn Simon*

**A**t this time, I feel I am learning so much from both Father Paul and Ron Ryan. They have obviously studied a great deal and both have clear ways to help people understand scripture and to grow in faith. I know St. Anne is a praying and caring community and I feel blessed to be a part of that. *Patty Lorentz*