

## St. Anne Catholic Parish

1411 First Ave. W.  
Seattle, WA 98119  
206-282-0223

[www.stanneseattle.org](http://www.stanneseattle.org)

### Pastoral Coordinator

Ron Ryan [rryan@stanneseattle.org](mailto:rryan@stanneseattle.org)

### Parochial Vicar

Fr. John Bowman

### Pastoral Asst. for Administration

Rich Santi [rsanti@stanneseattle.org](mailto:rsanti@stanneseattle.org)

### Pastoral Asst. for Faith Formation & Liturgy

Marian Young [marian@stanneseattle.org](mailto:marian@stanneseattle.org)

### Pastoral Asst. for Music

Paul Kramer [paul@stanneseattle.org](mailto:paul@stanneseattle.org)

### Bookkeeper

Anne Searing [anne@stanneseattle.org](mailto:anne@stanneseattle.org)

### Administrative Asst.

Kathy Picht [kathy@stanneseattle.org](mailto:kathy@stanneseattle.org)

## St. Anne Parish School

101 W. Lee St.  
Seattle, WA 98119  
206-282-3538

[www.stannesea.org](http://www.stannesea.org)

### Principal

Pat Durand [principalsta@stannesea.org](mailto:principalsta@stannesea.org)

### Vice-Principal

Mary Sherman [vprincipalsta@stannesea.org](mailto:vprincipalsta@stannesea.org)

### Administrative Asst.

Laura Bonney [schoolofficesta@stannesea.org](mailto:schoolofficesta@stannesea.org)

## Parish Councils & Commissions

### Pastoral Council

Carmen Suazo 284-8545

### Finance Council

Craig Parietti 284-7909

### Liturgy Commission

Marilyn Simon 783-9041

### School Commission

Danielle Purnell 784-8790

### Social Justice Commission

Patty Flowers 283-6889

### Stewardship Commission

Norman Shaffer 284-5020

## ST. ANNE CHURCH WEEK

Sunday, November 30, 2008

First Sunday of Advent

Liturgy of the Hours

Week I

8:00 AM	Mass <i>Mary Ellen Driscoll, Intentions</i>
10:00 AM	Mass <i>St. Anne Parishioners, Intentions</i>
11:00 AM	Coffee & Donuts
<b>MONDAY</b>	<b>December 1, 2008</b>
8:30 AM	Mass <i>† Roy Marti</i>
9:00 AM	Martha's Workers
<b>TUESDAY</b>	<b>December 2, 2008</b>
8:30 AM	Morning Prayer
7:00 PM	Mental Health Ministry
<b>WEDNESDAY</b>	<b>December 3, 2008</b>
8:30 AM	Mass <i>† JoAnne McCluskey</i>
7:00 PM	Pastoral Council
<b>THURSDAY</b>	<b>December 4, 2008</b>
9:00 AM	Mass <i>† Robert Land</i>
7:00 PM	Conversation Café
<b>FRIDAY</b>	<b>December 5, 2008</b>
8:30 AM	Mass
12:00 PM	Lydia Luncheon
7:30 PM	AA Meeting
<b>SATURDAY</b>	<b>December 6, 2008</b>
10:00 AM	Advent Penance Service & First Reconciliation
4:00 PM	RCIA
5:00 PM	Mass <i>† John Kirschner</i>
	<i>† Deceased</i>

### First Sunday of Advent (Staying Watchful)

November 30, 2008

**Reading I:** Isaiah 63:16b-17, 19b: 64:2-7  
(We are the Clay)

**Reading II:** 1 Corinthians 1:3-9  
(God Is Faithful)

**Gospel:** Mark 13:33-37  
(Be Alert!)

*Adults: What does "wait wisely and watch vigilantly" mean for you?*

*Children: How can you best prepare for Christmas this year?*



### Parish Communal Reconciliation Saturday, December 6, 10 am

Our Parish Reconciliation Service will be next Saturday, December 6, at 10 am. The service will include the celebration of the Sacrament of First Reconciliation with our young people who have been preparing for this sacrament. The service will include communal preparation followed by the opportunity for individual confessions. Please join us as we come together as a parish to “prepare the way of the Lord” in our own lives and in our community.

### Altar of Remembrance

If you have not already done so, please take home your pictures and mementoes after the Masses this weekend. Any remaining pictures can be picked up at the Parish Office the following week. Thank you for sharing the memory of your loved one with our parish community.

## Centennial Year Mass and Church Dedication Sunday, December 14, 10:00am

*Archbishop Brunett will celebrate the Mass, as we come to the end of our Centennial Year and rededicate our church. Many volunteers will be needed during the liturgy. Please call the parish office if you would like to help. In order to prepare for the Mass, the 8:00 am Mass will not be celebrated on that morning. Put this on your calendar!*

### Advent Retreats at Palisades

Are you looking for a way to deepen your spirituality during Advent? There are two Advent retreats being offered at the Palisades in December, one just for women and the other for men and women. Advent is about waiting with hope. This means slowing down during the hectic holiday preparations and taking time for prayer and reflection. Call the Palisades Retreat Center at 1-800-330-7622 to find out about these opportunities or take a look online at [www.seattlearch.org/palisades](http://www.seattlearch.org/palisades).



### Advent Prayer & Reflection

The weeks before Christmas are filled with activity, and it’s easy to lose sight of the meaning of the season. A **free resource is available** to help deepen your prayer and reflection throughout Advent. *Let Us Walk in the Light of the Lord* offers questions for reflection and faith-sharing based on the Scripture readings for the Sundays of Advent. **Families** can use the questions for mealtime sharing, or **individuals** can use them for personal prayer. The questions also help prepare for fuller participation in the Sunday Mass. Suggestions are offered for ways to make our preparation for Christmas more meaningful by putting our prayer and faith into action. Copies of *Let Us Walk in the Light of the Lord* are available free of charge and can be found on the table near the Assembly Room, or through the Parish Office.

### Healthy mind, body and spirit.

St. Anne’s Mental Health Ministry is joining with National Alliance on Mental Illness – NAMI – to offer support for individuals and their families suffering depression or anxiety. By joining NAMI, we will have information and resources to offer more help to any one who needs it. We get together and share, pray and learn we are not alone.

Join us in the Assembly Room, **December 2 & 16, 7 – 8:30 pm**. This is a Spiritual based support group, all are welcome.

# Children's Sacramental Prep

## Infant Baptism

Please call the parish office to receive a registration packet for the next baptism class which will be held **December 13, 2008** in preparation for the **January 10-11, 2009** baptisms. The registration materials along with a copy of the birth certificate attached are due back by **December 7**. There will be a limit of four children baptized at each Mass. Parents awaiting the birth of their child are also encouraged to attend this class.

## Parish Life



Please pray for parishioners and loved ones of parishioners who are serving our country in the military.

### And for the Sick:

Remie Bigormia, *mother of Myrna Canon*, Sally Burkland, Michael Casey, *brother of Terry*, Vera Cornall, Sheila Durch, Jack Gardner, Estelle Garson, Ashley Girard, LaVerne Goodrich, *daughter of Betty Edwards*, John Halff, Nora Hoisington, Bob Kirch, Erma Legaz, Mary Lewis, Lisa Kurtz Luciano, Carol Luster, Sheila McFarland, Didi McIntosh, Ginny McKibben, *daughter of Mary Shelley*, Nancy McNamee, *mother of Anne Schmidt*, Steve Moriarty, Ben Morris, Margaret Rowe Nelson, Bill Ohlstrom, *brother-in-law of Mary Krininger*, Joyce Powers, Evelyn Schwanke, Alice Truitt, LaVonne Veder, *daughter of Betty Edwards*, Claire Venables, Thelma Vogt, Mike Walker, *father of Lindsey Walker*, John Watchie, *son of Jeanne Jacobsen*, Michael Whitley, *brother-in-law of Joan Moeller*, Dick Young, and Mary Zamberlin, *daughter of Colleen Zamberlin*.

## Please join us for a Conversation Café



Throughout the past month, parishioners have been coming together for Conversation Cafés, small informal gatherings to discuss the future of St. Anne Parish.

**As we begin our second century, what do we want our community to look like?**

**As a parish, what is our mission—what are we called to do?**

The input from these Cafés will be used to develop new Vision and Mission Statements, which will become the basis for our future planning.

If you haven't participated in a Conversation Café, please join us **this Thursday, December 4, 7:00 pm** in the Assembly Room.

## Young Adult Potluck Sunday, Dec. 7, 5 pm

Young Adults, ages 18 - 35 (singles, couples and married with children) are invited to a potluck supper to get to know other young adults in our community. We want to hear your ideas of what you'd like to see offered at St. Anne. (We'll also be making and decorating Christmas cookies for residents of our local adult care facilities.)

Please bring (last name):

A - G main dish; H - N salad;

O - U dessert; V - Z beverage

For more information or to RSVP, contact Tim & Lisa Defors at [lisadefors@gmail.com](mailto:lisadefors@gmail.com) or Ron Ryan at [rryan@stanneseattle.org](mailto:rryan@stanneseattle.org) or 206-282-0223.

## ITALIAN DINNER 2008 THAT'S AMORE!

### Grazie!

Last Saturday's Italian Dinner was a huge success in every sense of the word! Nearly 400 people were there as diners or as volunteers. Thank you to everyone who helped support the parish through their patronage. Over \$30,000 was raised to help reduce the debt remaining from the School Renovation-Banchero Hall Construction project. Your generosity is greatly appreciated by our entire parish and school community!

The list of volunteers is too long to include everyone's name, but each and every one of you is to be thanked immensely! Special thanks are given to the Italian Dinner Co-Chairs, Kelly Nolan Shafer and Mike Vizzare, whose energy, commitment and countless hours of work made the evening possible. Also, thanks to Erin Oest-Larsen of the staff whose expertise in keeping all the details coordinated is amazing. To everyone, "Grazie!"



PSALMS OF GRATITUDE -  
WE GIVE THANKS

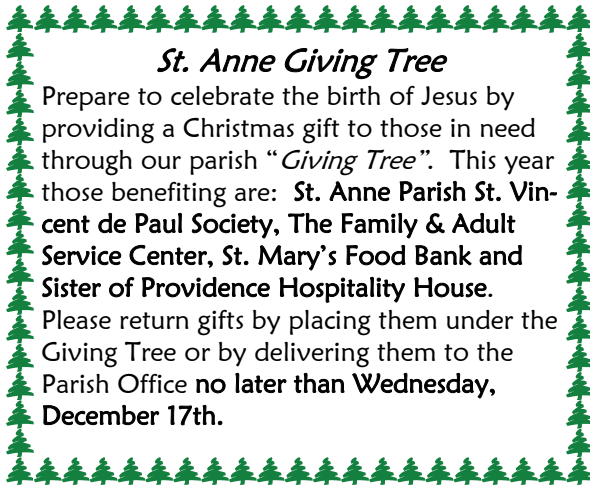
Psalm 33:5 The Lord loves justice and  
right and fills the earth with goodness.

**ADVERTISER**  
*of the week*

Stewardship/  
Other

We appreciate the support of the fine members  
of the business community whose ads appear  
on the back of the bulletin.

**This week we would like to thank:**  
**Queen Anne Healthcare**



**St. Anne Giving Tree**

Prepare to celebrate the birth of Jesus by  
providing a Christmas gift to those in need  
through our parish "Giving Tree". This year  
those benefiting are: **St. Anne Parish St. Vin-  
cent de Paul Society, The Family & Adult  
Service Center, St. Mary's Food Bank and  
Sister of Providence Hospitality House.**  
Please return gifts by placing them under the  
Giving Tree or by delivering them to the  
Parish Office **no later than Wednesday,  
December 17th.**

**St. Anne Dinner for Homeless**

Our Christmas dinner for the homeless will be  
**Monday, December 15th.** We need home-  
cooked turkeys and hams, stuffing, salads,  
mashed potatoes, rolls/butter and cookies. If  
you can help, please call Nancy Moriarty, 206-  
283-3763, or Connie Lamb, 206-284-8316; for  
cookies please call Joan Moeller, 206-284-  
7060. If you wish to make a monetary dona-  
tion, please put it in an envelope marked:  
"Dinner for Homeless" and place in the regular  
collection basket. Thank you.



**HOLIDAY LYDIA LUNCHEON**

*for parish seniors*

**Friday, December 5**

**Noon in the Assembly Room**

*Come join us for a Holiday luncheon.*

*Bring bread, wine or dessert if you choose.  
We'll supply hot soup!*

*Bring a small gift to exchange.*



**Mark your calendar!**

**Upcoming events  
At St. Anne Parish**

**Thursday, December 4 - 7:00 pm**  
**Conversation Café**

Come together with other parishioners to discuss  
your ideas about St. Anne's future.

**Friday, December 5 - 12:00 noon**  
**Lydia Luncheon**

Parish seniors are invited to this holiday luncheon  
and gift exchange.

**Saturday, December 6 - 10:00 am**  
**Parish Penance Service**

Our parish second graders will celebrate their First  
Reconciliation at our Advent communal celebra-  
tion of the Sacrament of Penance.

**Sunday, December 7 - 5:00 pm**  
**Young Adult Potluck**

Parishioners 18 - 35 are invited to a potluck dinner to  
discuss future young adult activities at St. Anne.

**Monday, December 8**  
**Feast of the Immaculate Conception**

Mass at 8:45 am and at 7:00 pm

**Sunday, December 14 - 10:00 am**  
**Dedication of the Church**

Archbishop Alex Brunett will dedicate our newly  
renovated church at the 10 am Mass. A reception  
will follow. *(Please note—there will be no 8 am  
Mass on this Sunday.)*

**Monday, December 15 - 6:00 pm**  
**Holiday Dinner for the Homeless**

St. Anne will host our homeless sisters and broth-  
ers for our traditional Holiday Meal.

Parish  
& School  
Life

**Join St. Anne students in providing new hats, gloves and socks** for both adult men and  
women to present to our neighbors at our **Christmas Dinner for the Homeless on Monday,  
December 15.** Collection boxes for these items are at all the doors of the church.